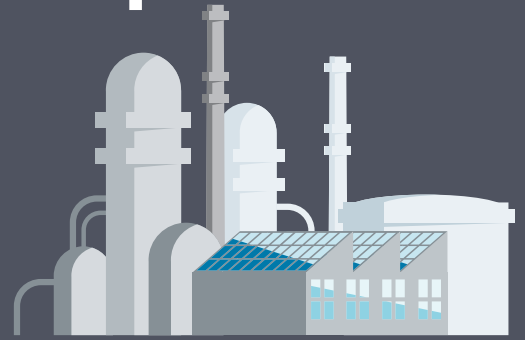


Simple operating concept offers an incredible increase in productivity



Albert Knoblinger GmbH & Co. KG, headquartered in Ried im Innkreis in the Upper Austrian Innviertel has been dealing with mechanical bulk materials technology for decades. Today the owner-managed family business with approximately 80 employees is an established name in the field of plant engineering for bulk materials. The performance spectrum extends from consulting, planning and design to manufacturing, installation and service of the plants. The Upper Austrian firm has a product portfolio that includes plant components for sawmills and chipboard manufacturers, as well as screw conveyors, scraper conveyors or slider elements for the steel industry, the building materials industry and the farming industry. Also turnkey wood pelleting plants with an hourly capacity of up to 40 tons, in which saw waste wood, sawdust and wood chips, as well as energy woods or biomass, are processed.

CHALLENGE

Since, for the most part, the plants produced by Knoblinger are custom-tailored special constructions with a lot size of one, high vertical integration is absolutely essential for the success of the enterprise. Consequently, Knoblinger has a mastery of processes, such as laser cutting, chamfering or the welding itself, that are crucial for sheet metal manufacturing. The enterprise is highly flexible in manufacturing, and thus to a great extent it is independent of suppliers. Welding is one of the core processes and there are more than 20 welding machines in operation. Because they do not manufacture in series production the welders should be able to achieve the required welding results easily and above all quickly, starting with the very first part. In the course of an upcoming new investment welding devices from three well-known manufacturers were thoroughly tested by Knoblinger's own welders. Ultimately Lorch prevailed with the extremely easy to handle S series SpeedPulse XT; in particular due to the operating concept.

SMART SOLUTION FROM LORCH: LORCH S SERIES SPEEDPULSE XT

The Lorch S series SpeedPulse XT with all speed processes not only offers an outstanding operating concept, it also scores points with the best welding characteristics and the highest flexibility. Lorch's flagship product

offers patented control technology, a variable arc length control and dynamic settings that enable highly individual welding with virtually no spatter. The devices are equipped with the water-cooled Lorch Powermaster MW5900 welding torch, which is easy to handle thanks to its ergonomic shape and low weight. Thus, it ensures fatigue-free welding. Moreover, the interchangeable nozzle holder and the plug-in gas nozzle with gas nozzle seat also allow fast and easy replacement of wear parts. (Text: Ing. Norbert Novotny)



PLANT ENGINEERING

THIS IS THE CUSTOMER'S VERDICT:

"The welding results of the devices that we compared were virtually identical. With the time factor that was required for the settings and welding, Lorch was one step ahead. After six months of practical experience with the Lorch devices, our welders are still absolutely convinced of

the operating concept. And this is the crucial factor for us."

Franz Luger,
production manager
at Knoblinger



Thanks to its ergonomic shape and its light weight the Lorch Powermaster MW5900 welding torch ensures fatigue-free welding.

Equipped with all speed processes Lorch's S-series scores with optimal welding characteristics and the highest flexibility.



Direct access to all important parameters: the clearly structured control panel of the S series. At the right is the control element that lets the welder individually adjust the arc from hard to soft (dynamic control).

Wood pelleting – from planning to service: With more than 40 plants commissioned Knoblinger can rightly count itself among the market leaders throughout Europe in this area (photo right).



Photos: Norbert Nowotny, Alfred Knoblinger GmbH & Co. KG, Lorch

Would you like to learn more?
Mr. Schierl accompanied this project and
will be happy to receive your inquiry: andreas.schierl@lorch.eu.

LORCH
smart welding